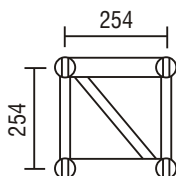


## TFL Serious Truss Serious Light Duty

**TOTAL**  
FABRICATIONS

Serious Light Duty Truss has the same overall dimensions as Generic Light Duty Truss, but offers even greater load carrying capacities and spans than the original. The use of thicker chords and diagonals increases the bending and shear strength of the truss which is offered with Fork End connectors as standard.

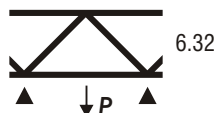


### Load Table

Span (metres)		2	4	6	8	10	12	14	16
UDL	kg	2908	2631	2493	1828	1412	1122	902	764
DEFL	mm	2	7	22	38	56	80	106	141
CPL	kg	2267	1934	1247	914	706	561	451	382
DEFL	mm	2	7	17	32	46	69	90	121
TPL	kg	1165	1144	935	686	530	421	338	287
DEFL	mm	2	9	21	36	57	80	110	146
QPL	kg	811	728	623	457	353	280	225	191
DEFL	mm	2	8	20	36	54	78	104	135

Span (metres)		
Cantilever Span		3
UDL	kg	998
DEFL	mm	13
CPL	kg	561
DEFL	mm	19

### Point Load Mid kN



Connection: Fork fitting. Fixings: TFT truss pin and R3 R Clip

- All loads are given in Kilograms
- Allowance has been made for self-weight of truss
- Allowance has been made for frequent use factor of 85% according to prEN17115
- The payload of the truss has been calculated as a permanent action. Should it be necessary to consider the payload as a variable action, the tabulated figures should be reduced to 90% of the given values.

## TFL Serious Truss Serious Light Duty



### Material Specifications

Main Cord:	48.44mm x 4.47mm
Braces:	25.44mm x 3.25mm
Material:	EN AW-6082 T6
Fixings:	Fork End : TFT pins & R3 Clips

### Accessories

Circles
Angled Corners
Bespoke Lengths
Hinges and Swivels

### Item Codes, Weights and Dimensions

SLD5F	Serious LD 5ft Truss Section	1576mm x 305mm x 305mm	17 kg
SLD8F	Serious LD 8ft Truss Section	2499mm x 305mm x 305mm	27 kg
SLD10F	Serious LD 10ft Truss Section	3100mm x 305mm x 305mm	32 kg
SLD1M	Serious LD 1M Truss Section	1026mm x 305mm x 305mm	12 kg
SLD2M	Serious LD 2M Truss Section	2026mm x 305mm x 305mm	22 kg
SLD3M	Serious LD 3M Truss Section	3026mm x 305mm x 305mm	32 kg
SLD4M	Serious LD 4M Truss Section	4026mm x 305mm x 305mm	42 kg
SLDC4M	Serious LD 4 Way Corner Section	465mm x 465mm x 325mm	17 kg

### Design Specification

Manufactured in accordance with

BS EN 1090-3:2008 : Technical Requirements for aluminium structures

EN ISO 9001:2008 : Quality management systems

BS EN 1999 Pt 1-1 : Design of Aluminium Structures, General structural rules

prEN 17115 : Entertainment Technology – Specification for design and manufacture of aluminium and steel trusses.

