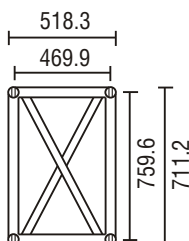


TFL Serious Truss Serious Heavy Duty

TOTAL
FABRICATIONS

Serious Heavy Duty Truss has the same overall dimensions as Generic Heavy Duty Truss, but offers even greater load carrying capacities and spans than the original. The use of thicker chords and diagonals increases the bending and shear strength of the truss which is offered with Fork End connectors as standard.

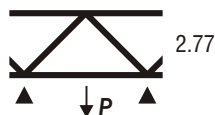


Load Table

Span (metres)		3	6	9	12	15	18	21	24
UDL	kg	4535	4305	3397	2670	1996	1598	1245	1003
DEFL	mm	4	7	13	21	31	43	57	97
CPL	kg	3863	2225	1632	1335	998	799	622	502
DEFL	mm	4	6	12	23	35	51	67	86
TPL	kg	2100	1601	1156	1001	749	599	467	376
DEFL	mm	3	6	12	29	44	63	82	104
QPL	kg	1462	1279	853	668	499	400	311	251
DEFL	mm	2	7	13	27	41	59	77	98

Span (metres)		3
Cantilever Span		
UDL	kg	1404
DEFL	mm	4
CPL	kg	1061
DEFL	mm	7

Point Load Mid kN



Connection: Fork fitting. Fixings: TTF truss pin and R3 R Clip

- All loads are given in Kilograms
- Allowance has been made for self-weight of truss
- Allowance has been made for frequent use factor of 85% according to prEN17115
- The payload of the truss has been calculated as a permanent action. Should it be necessary to consider the payload as a variable action, the tabulated figures should be reduced to 90% of the given values.

TFL Serious Truss Serious Heavy Duty



Material Specifications

Main Cord: 48.44mm x 4.47mm
Braces: 38.1mm x 3.25mm
Material: EN AW-6082 T6
Fixings: Fork End : TFT pins & R3 Clips

Accessories

Circles
Angled Corners
Bespoke Lengths
Hinges and Swivels

Item Codes, Weights and Dimensions

SHD5F	Serious HD 5ft Truss Section	1576mm x 762mm x 521mm	34 kg
SHD8F	Serious HD 8ft Truss Section	2499mm x 762mm x 521mm	47 kg
SHD10F	Serious HD 10ft Truss Section	3100mm x 762mm x 521mm	56 kg
SHD1M	Serious HD 1M Truss Section	1026mm x 762mm x 521mm	25 kg
SHD2M	Serious HD 2M Truss Section	2026mm x 762mm x 521mm	40 kg
SHD3M	Serious HD 3M Truss Section	3026mm x 762mm x 521mm	56 kg
SHD4M	Serious HD 4M Truss Section	4026mm x 762mm x 521mm	71 kg
SHDC4	Serious HD 4 Way Corner Section	681mm x 681mm x 762mm	39 kg
SHDS4	Serious HD Sleeve Section	681mm x 681mm x 762mm	43 kg

Design Specification

Manufactured in accordance with

BS EN 1090-3:2008 : Technical Requirements for aluminium structures

EN ISO 9001:2008 : Quality management systems

BS EN 1999 Pt 1-1 : Design of Aluminium Structures, General structural rules

prEN 17115 : Entertainment Technology – Specification for design and manufacture of aluminium and steel trusses.

