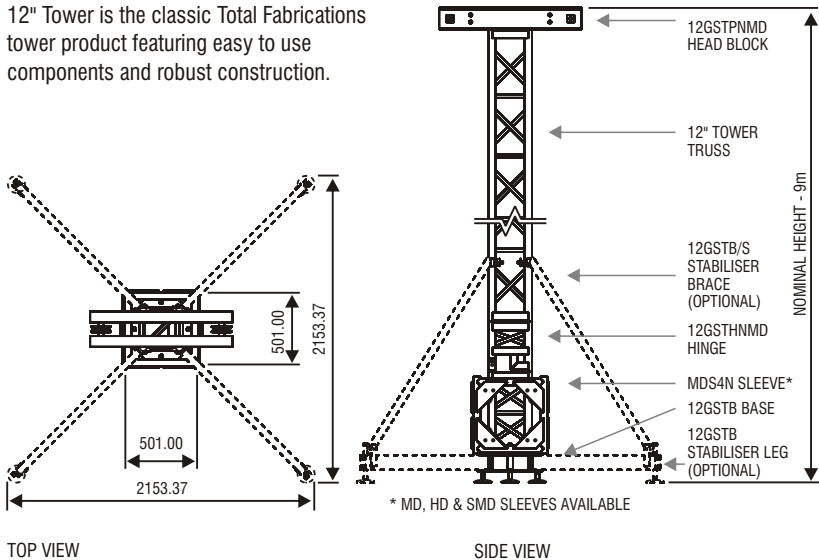


## Tower Systems 12" Tower



12" Tower is the classic Total Fabrications tower product featuring easy to use components and robust construction.



### Components

**Head Block; 12GSTPNMD** – Features include, Aluminium chain wheels for long lasting service.

**Sleeve Block; MDS4, HDS4, SMDS4** – Features include, Variety of Different sleeve blocks all featuring internally mounted wheels.

**Base Unit; 12GSTB** – Features include, Lightweight and compact Aluminium construction with adjustable feet. Optional outriggers available.

**Tower Lifting Frame; MDTLF** – Allows for the safe erection of the tower using a motor to control both the lift and descent. No working at height is necessary for this operation.

## Tower Systems 12" Tower



### Material Specifications

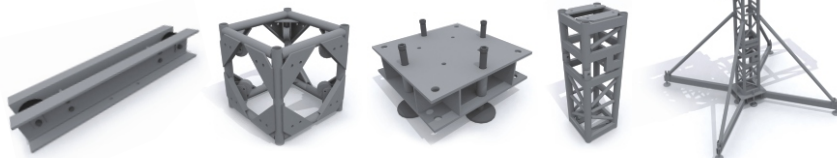
Mast Type:	12" Tower, 30.5cm x 30.5cm
Horizontal Truss Types:	MD Truss; HD Truss; SMD Truss
Material Specifications:	EN AW-6082 T6
Fixings:	M16 x 45mm grade 8.8 HT Nuts & bolts
Tower Capacity:	Nominal 2000 kgs

### Item Codes, Weights and Dimensions

12GSTHNM	12" sq. tower hinge section (MD truss 929mm)	930mm x 305mm x 305mm	20kg
12GSTHNH	12" sq. tower hinge section (HD truss 1110mm)	1110mm x 305mm x 305mm	24kg
12GSTB	12" sq. tower base unit	460mm x 270mm x 460mm	18kg
12GSTPNM	12" sq. tower top pulley section for MD/HD	1250mm x 155mm x 248mm	16kg
12GSTS	Set of adjustable stabilisers - 12" sq. tower (4 per set)	1220mm x 300mm x 250mm	24kg
12GSTSBMD	Set of stabiliser braces - 12" sq. tower (4 per set) MD	1850mm x 250mm x 250mm	16kg
12GSTSBHD	Set of stabiliser braces - 12" sq. tower (4 per set) HD	1970mm x 250mm x 250mm	20kg
MDS4	Medium Duty 4 Way Sleeve block for 12" tower	520mm x 520mm x 500mm	33kg
HDS4	Heavy Duty 4 Way Sleeve block for 12" tower	520mm x 720mm x 500mm	47kg
SMDS4	Serious Medium Duty 4 Way Sleeve block for 12" tower	681mm x 681mm x 521mm	38kg
MDTPB	Medium Duty Truss pickup Beam SWL 1000kg	530mm x 152mm x 130mm	4.5kg
MDSPB	Medium Duty truss Sleeve pick up beam - SWL 1000kgs	343mm x 520mm x 533mm	15kg
HDSPB	Heavy Duty truss Sleeve pick up beam - SWL 1000kgs	343mm x 720mm x 533mm	18kg
MDTLF	Medium Duty Truss Tower Lifting Frame	3210mm x 170mm x 620mm	52kg

### Design Specification

Manufactured in accordance with  
BS EN 1090-3:2008 : Technical Requirements for aluminium structures  
EN ISO 9001:2008 : Quality management systems  
BS118 The Structural Use of Aluminium  
CE Certified



Head Block

Sleeve Block

Base Unit

Hinge Section

Tower

- All loads are given in Kilograms
- Allowance has been made for self-weight of truss
- The payload of the truss has been calculated as a permanent action. Should it be necessary to consider the payload as a variable action, the tabulated figures should be reduced to 90% of the given values

