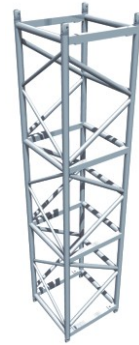
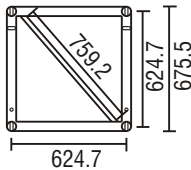


## TFL Serious Truss Extra Heavy Duty



Extra Heavy Duty Truss has exceptionally high load handling capabilities making it ideal for use in the larger outdoor roof structures. Additional facilities allow other roof interface components to work efficiently with this truss.



### Load Table

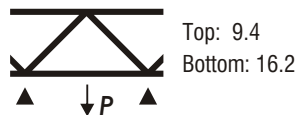
Span (metres)		2	4	6	8	10	12	14	16	18	20	22	24	26	28	30
UDL <sub>bottom chord</sub>	kg	7747	5994	5627	5382	4689	4037	3609	3180	2752	2324	2080	1835	1590	1427	1264
DEFL	mm	2	4	10	19	32	46	61	79	98	121	147	173	202	234	269
UDL <sub>top chord</sub>	kg	5668	5056	5056	5056	4689	4037	3609	3180	2752	2324	2080	1835	1590	1427	1264
DEFL	mm	4	4	9	18	31	46	61	79	98	121	147	173	202	234	269
CPL	kg	2345	3466	2854	2181	1886	1631	1468	1315	1152	999	907	815	734	652	581
DEFL	mm	2	5	11	17	24	33	45	57	73	88	109	130	154	176	202
TPL	kg	1427	2263	1682	1488	1295	1101	1019	938	856	775	703	622	550	499	459
DEFL	mm	2	5	9	18	31	43	57	72	90	114	139	162	192	222	255
QPL	kg	887	1590	1427	1223	1101	938	836	744	642	550	499	438	387	347	306
DEFL	mm	2	5	11	19	30	41	56	73	92	112	136	160	188	216	247

Connection: Fork fitting. Fixings: TFT truss pin and R3 R Clip

### Span (metres)

Cantilever Span		3
UDL	kg	1896
DEFL	mm	6
CPL	kg	642
DEFL	mm	9

### Point Load Mid kN



- All loads are given in Kilograms
- Allowance has been made for self-weight of truss
- Allowance has been made for frequent use factor of 85% according to EN17115
- The payload of the truss has been calculated as a permanent action. Should it be necessary to consider the payload as a variable action, the tabulated figures should be reduced to 90% of the given values.

## TFL Serious Truss Extra Heavy Duty



### Material Specifications

Main Cord:	50.8mm x 6.25mm
Braces:	38.1mm x 3.25mm
Material:	EN AW-6082 T6
Fixings:	Fork End : TFT pins & R3 Clips

### Accessories

Circles
Angled Corners
Bespoke Lengths
Hinges and Swivels

### Item Codes, Weights and Dimensions

EHD0.5M	Extra HD 5ft Truss Section	500mm x 676mm x 676mm	12.5 kg
EHD1M	Extra HD 8ft Truss Section	1000mm x 676mm x 676mm	21 kg
EHD1.5M	Extra HD 10ft Truss Section	1500mm x 676mm x 676mm	27 kg
EHD2M	Extra HD 1M Truss Section	2000mm x 676mm x 676mm	38 kg
EHD2.5M	Extra HD 2M Truss Section	2500mm x 676mm x 676mm	46.5 kg
EHD3M	Extra HD 3M Truss Section	3000mm x 676mm x 676mm	55 kg
EHD4M	Extra HD 4M Truss Section	4000mm x 676mm x 676mm	63.5 kg
EHDC4	Extra HD 4 Way Corner Section	825mm x 825mm x 676mm	39 kg
EHDS4	Extra HD Sleeve Section	825mm x 825mm x 676mm	48 kg

### Design Specification

Manufactured in accordance with

BS EN 1090-3:2008 : Technical Requirements for aluminium structures

EN ISO 9001:2008 : Quality management systems

BS EN 1999 Pt 1-1 : Design of Aluminium Structures, General structural rules

EN 17115 : Entertainment Technology – Specification for design and manufacture of aluminium and steel trusses.

